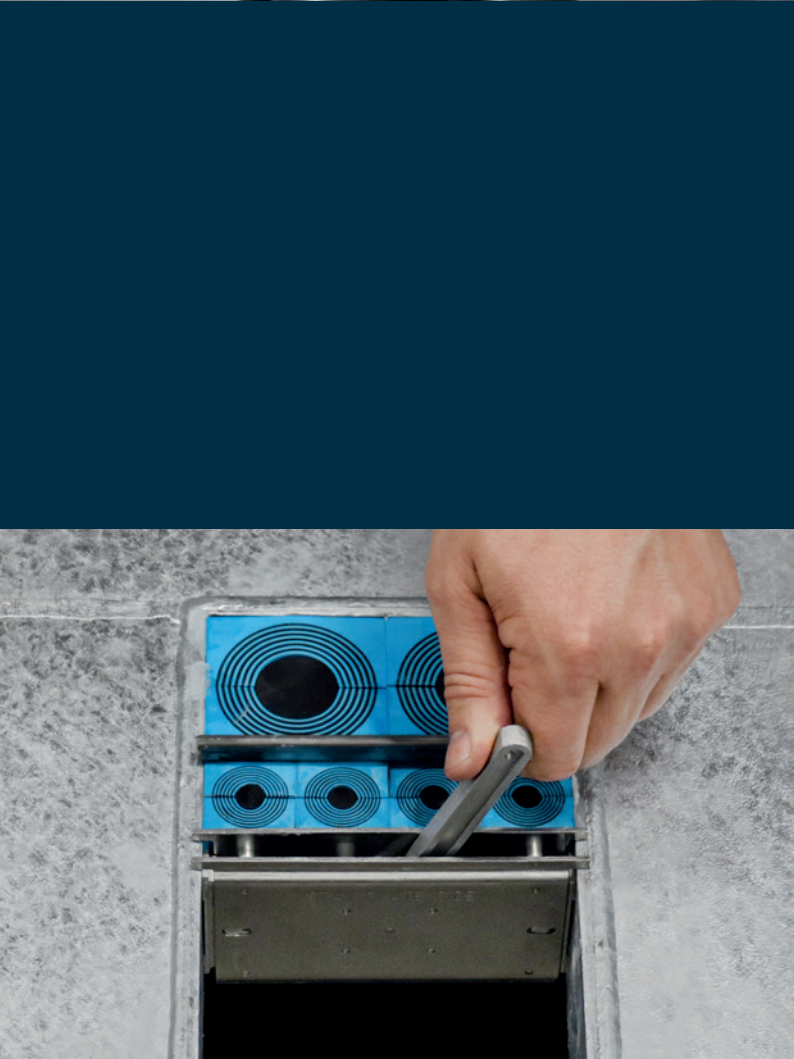


Roxtec installation tools





Roxtec Holder tools

Roxtec holder tools work as an extra hand and help you during transit installation by holding loose elements such as sealing modules, stayplates and cables.

The module holder tool is a practical tool for use in horizontal installations to hold modules and stayplates in place and prevent them from falling. By mechanical force it can also hold the installation in place during short breaks or temporarily keep cables away.

The stayplate clamps are a tool designed to hold stayplates firmly in place during horizontal installations. When used in pairs, one can hold the installed packing material in place while the other prevents modules from falling by holding the next stayplate in place.

The stayplate clip is designed to hold stayplates and smaller cables at the top of the transit and out of the way during installations.

- For easy installation of transits
- Ideal for horizontal installation



MODULE HOLDER TOOL



STAYPLATE CLAMPS



STAYPLATE CLIP 120

Name	Weight (kg)	Art. No
MODULE HOLDER TOOL	0.34	189058
STAYPLATE CLAMPS HORIZONTAL INST. S 2PCS	0.05	ICT0001000100
STAYPLATE CLIP 120	0.02	ICT0001000200



Roxtec Pre-compression tools

Roxtec pre-compression tools simplify the installation of sealing modules and compression units. They can pre-compress the contents of the frame making room for the compression unit and also hold the packing material in place during short breaks in the installation work.

The pre-compression tool S/L is used when pre-compression force is needed early in the installation. It has a long stroke and can be used in incomplete installations when the installation will be partially installed over longer periods of time.

The eccentric tools in lightweight aluminum are designed to fit standard 3/8" square drives. They come in three different sizes to be used at different packing heights.

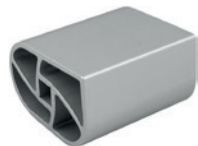
The pre-compression wedges exert a strong force by the tightening of a screw. They have a small footprint and are used just before inserting the wedge. They have a long-lasting expansion and can be left in the frame over time to fixate the packing material.

The handgrip pre-compression tool is a lever that distributes force in the frame by manual force. It has a small footprint to fit the smallest gaps and is used directly before inserting the Roxtec wedge.

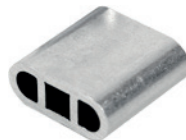
- Practical tools to simplify compression of sealing modules



PRE-COMPRESSION TOOL LARGE



PRE-COMP ECCENTRIC TOOL LARGE



PRE-COMP ECCENTRIC TOOL COMPACT

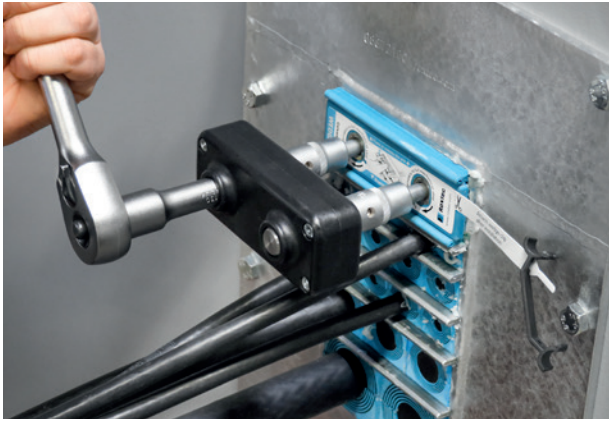


PRE-COMPRESSION WEDGE 120



HANDGRIP PRE-COMP

Name	Weight (kg)	Art. No
PRE-COMPRESSION TOOL SMALL	0.38	5ICT000001269
PRE-COMPRESSION TOOL LARGE	0.45	ICT0001000000
PRE-COMP ECCENTRIC TOOL SMALL	0.06	ICT0001000302
PRE-COMP ECCENTRIC TOOL LARGE	0.12	ICT0001000301
PRE-COMP ECCENTRIC TOOL COMPACT	0.03	ICT0001000316
PRE-COMPRESSION WEDGE 120	0.32	ICT0001000500
PRE-COMPRESSION WEDGE 40/60	0.15	5ICT000003691
HANDGRIP PRE-COMP	0.42	ICT0001000401



Roxtec Compression unit tools

Roxtec compression unit tools are made for use when handling Roxtec compression wedges.

The wedge tightening tool is designed to shorten the time for compressing the Roxtec wedge by transforming the two motions required on the screws into one. It fits a 1/2" socket drive.

The wedge puller makes it easier to remove the wedge from the transit. By attaching the hook to the screws on the compression unit, the tool pulls the Roxtec wedge out by mechanical force.

The top packing puller is used to remove older versions of compression units from the transits during upgrades.

The top packing puller adapter is used with the top packing puller to remove other types of compression units.

- Practical tools for managing the compression wedge



TOP PACKING PULLER



TOP PACKING PULLER ADAPTER

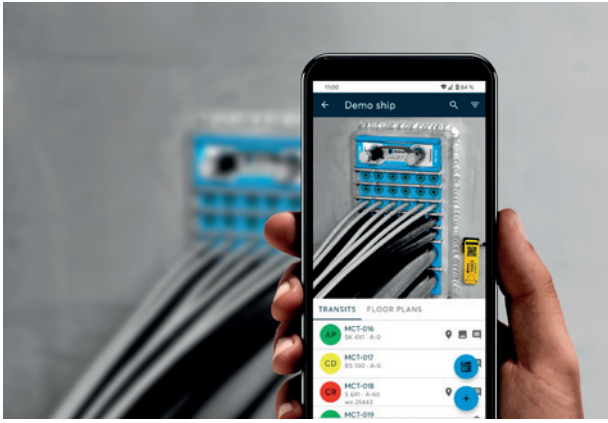


WEDGE PULLER



WEDGE TIGHTENING TOOL

Name	Weight (kg)	Art. No
TOP PACKING PULLER	0.94	IPP0001000000
TOP PACKING PULLER ADAPTER	0.25	ICT0002000000
WEDGE PULLER	0.8	103248
WEDGE TIGHTENING TOOL	0.67	103460



Roxtec Inspection tools

Roxtec inspection tools help you identify transits, choose the right sealing modules, pressure test your transits or protect the transit from being tampered.

The transit ID-kit is used to give transits individual names and enable a record of all transits on an installation site. It works integrated with Roxtec transit management software through the QR codes and number series.

The module adaption indicator helps inspecting the sealing modules and show how many layers should be left on each module depending on cable/pipe size. It also helps selecting the correct sealing module before installation and shows how many layers to peel.

The identification plate ETA is used for marking transits following the rules in the ETA.

The test pipe is installed in frames with double barriers such as the SBTB frame. By inserting water or gas between the barriers, the transit can be tested for integrity and prove the transit holds the wanted pressure.

The wedge lock kit not only gives a clear signal on tamper protection, a broken seal also indicate a possible un-authorized transit opening.

- Practical tools to simplify inspection of transits



TRANSIT ID KIT 100-PACK



ROXTEC MODULE ADAPTION INDICATOR



IDENTIFICATION PLATE ETA

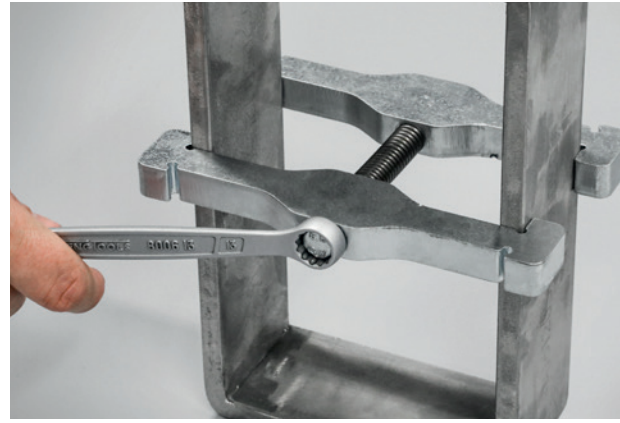


TEST PIPE



WEDGE LOCK 120 KIT AISI316

Name	Weight (kg)	Art. No
TRANSIT ID KIT 100-PACK	0.43	198451
ROXTEC MODULE ADAPTION INDICATOR	0	IQR2009000101
IDENTIFICATION PLATE ETA	0.02	173805
TEST PIPE	0.05	ICT2006000130
WEDGE LOCK 120 KIT AISI316 10-PACK	0.56	233976
WEDGE LOCK 120 KIT GALV 10-PACK	0.7	233975



Roxel Welding tools

Roxel welding fixtures are designed to prevent frames from expanding out of tolerance during welding. By clamping the frame partition walls early in the welding process the heat input from the weld is managed. Roxel welding fixtures are available in sizes 60 mm and 120 mm. Welding fixture 60 and 120 are used with Roxel S series frames and welding fixture C LW/K are to be used with the Roxel Compact lightweight frames C LW/K.

- For protection of frame during welding



WELDING FIXTURE 120



WELDING FIXTURE 60

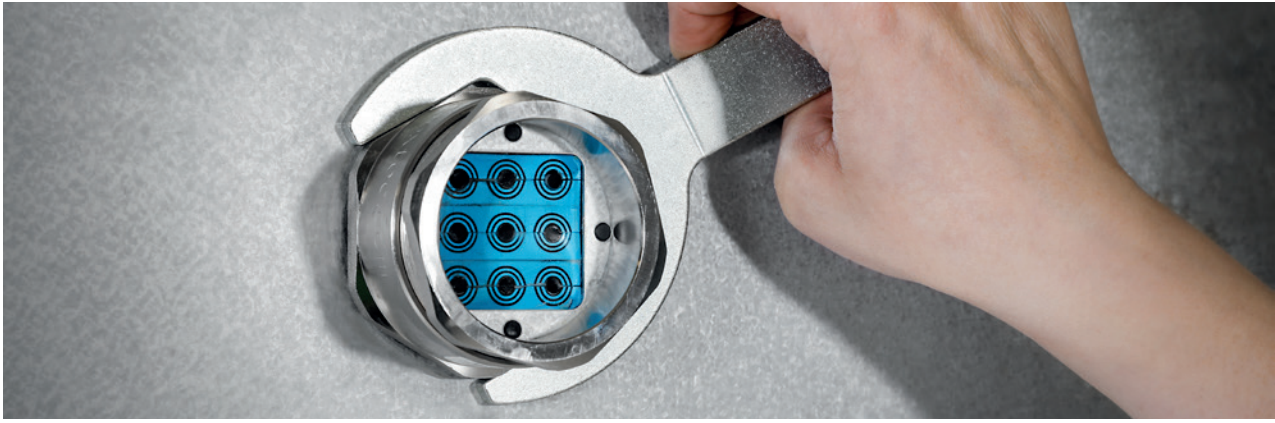


WELDING FIXTURE
C LW/K 120



WELDING FIXTURE
C LW/K 60

Name	Weight (kg)	Art. No
WELDING FIXTURE 120	0.9	121932
WELDING FIXTURE 60	0.91	166441
WELDING FIXTURE C LW/K 120	2.12	234453
WELDING FIXTURE C LW/K 60	0.96	234449



Roxtec RG M63 tools

Roxtec RG M63 tools are wrenches designed to fit the 64mm nut and 68mm housing of the Roxtec RG M63 seal.

- For easy installation of RG M63 seal



RG M63 TOOLS - 2-PACK



RG M63 TOOL 3/8 GRIP

Name	Weight (kg)	Art. No
RG M63 TOOLS – 2-PACK	0.62	5IRG000001545
RG M63 TOOL 3/8 GRIP	0.33	ICT2010000001

Protecting life and assets

roxtec.com/tools