

Cable and pipe seals for infrastructure projects

Contents

Protecting life and assets	3
The Roxtec sealing system	4
Certified protection	5
Roxtec Transit Designer™	6
Roxtec BIM objects	7
Easy installation	8
Solutions for walls, floors and roof-tops	10
Roxtec GH transit	12
Roxtec GH FL100 transit	13
Roxtec GHM transit	14
Roxtec G transit	15
Roxtec GKO transit	16
Roxtec SwanNeck transit	17
Roxtec R transit with SLF R	18
Roxtec R transit with SL R	19
Roxtec RS seal with SLF RS	20
Roxtec RS seal with SL RS	21
Roxtec RS seal with SLFO/Ext	22
Solutions for underground foundations	23
Roxtec R UG™ transit	24
Roxtec RS UG™ seal	25
Roxtec H3 UG™ seal	26
Roxtec knock-out sleeve	27
Solutions for cabinets	28
Roxtec CF 16 transit	29
Roxtec CF 8/32 transit	30
Roxtec CF 24 transit	31
Roxtec ComSeal™	32
Roxtec EzEntry™	33
Roxtec CRL seal	34
Roxtec RG M63 seal	35

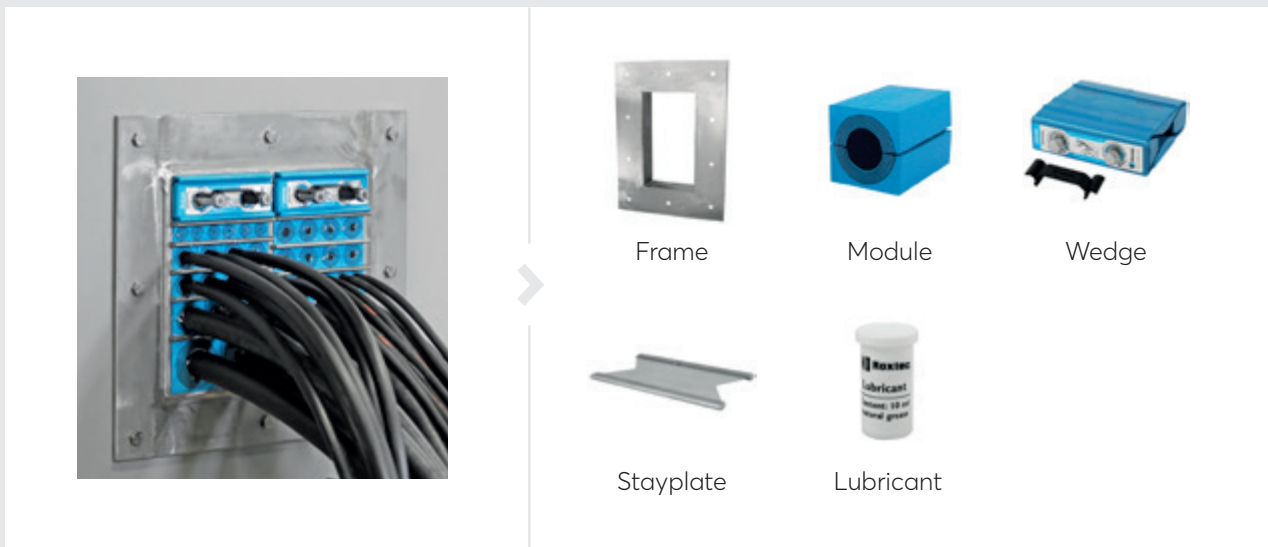


Protecting life and assets

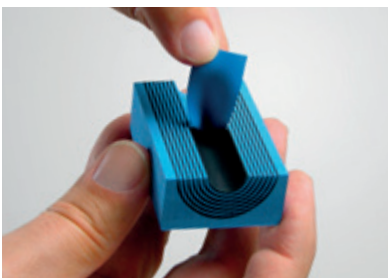
Benefit from the world's most flexible cable and pipe transits, wherever and whatever you operate. You can count on our expertise, from design to installation and throughout the lifecycle of your investment. Our passion is innovative sealing solutions, and our goal is to make our world a safer place. That is why we offer you a long-term partnership for efficiency and operational reliability.

The Roxtec sealing system

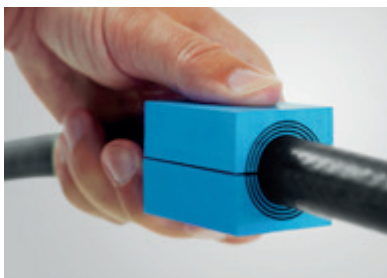
Our mechanical system is smart, safe and flexible. We provide rectangular, round and customized sealing solutions for one or multiple cables and pipes as well as pre-configured sealing kits. Thanks to the adaptability, you can always be sure to cover the sealing requirements with only a few components.



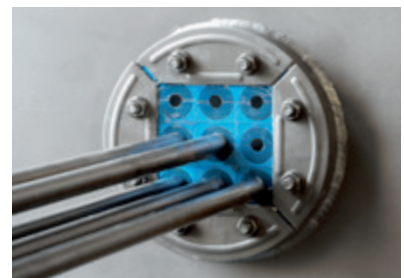
Multidiameter™ by Roxtec



Our invention with removable layers makes the seals adaptable.



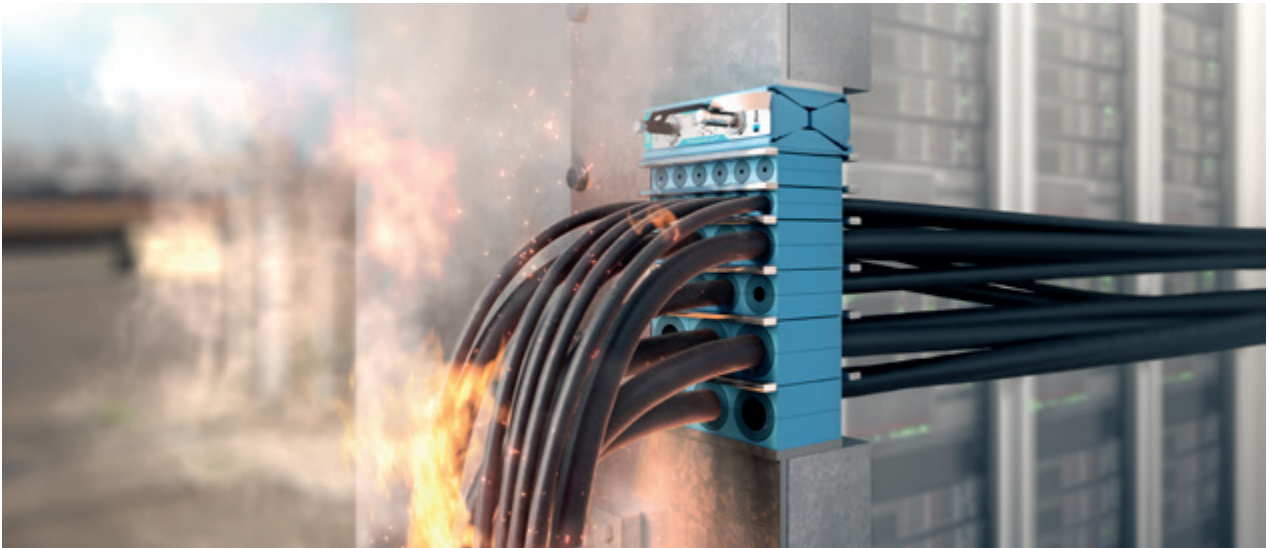
It ensures a perfect fit to cables and pipes of many different sizes.



You get a strong, reliable barrier securing operational performance.

Certified protection

Roxtec cable and pipe transits provide proven sealing performance in demanding construction projects worldwide. The seals protect vital infrastructure against multiple risk factors and ensure safety, efficiency and long-term operational reliability.



Use the Roxtec sealing system to protect against multiple risks:

Fire and smoke

Stop fire and smoke from spreading.

Water

Keep your unit safe and dry. Prevent humidity, water ingress, flooding and corrosion.

Pests

Keep snakes, insects and rodents out.

Gas and air

Ensure complete tightness against air and gas pressure.

Electromagnetic threats

Shield against EMI, EMP and lightning strike effects.

Pull-out

Ensure cable retention and strain relief.

Temperature challenges

Handle hot, cold and changing environments. Secure UV resistance.

Blast

Protect against vibration, blast load and the risk of explosion.

“We save a lot of time, up to 80%, especially when changes are needed.”

Niels Ammundsen, Chief Process Officer at OMT, Denmark



Roxtec Transit Designer™

This free, online engineering tool simplifies product selection and secures the entire process of reducing risk. Save time by designing hundreds of cable and pipe transits in just a few minutes. The software is open for third party integration with CAD programs.

Simple user input:

- Cable/pipe schedule or estimates
- Sealing/certification requirements
- Installation preferences
- Material quality selection



Automatically generated output:

- 2D drawings in DXF and PDF
- 3D STEP
- Bill of material in Excel
- Installation instructions
- Certificates

Sign up for Roxtec Transit Designer™ at roxtec.com/transitdesigner

Roxtec BIM objects

Download Roxtec BIM (building information modeling) objects to optimize your design workflow. You can plan, design, construct and manage buildings and other assets in infrastructure projects. We can also assist you from the early design phase. We have an entire team of designers, engineers and test technicians ready to create, develop and test tailor-made seals according to your requirements.



Streamline the workflow

- Benefit from early integration
- Ensure correct drawings
- Repeat in your next project

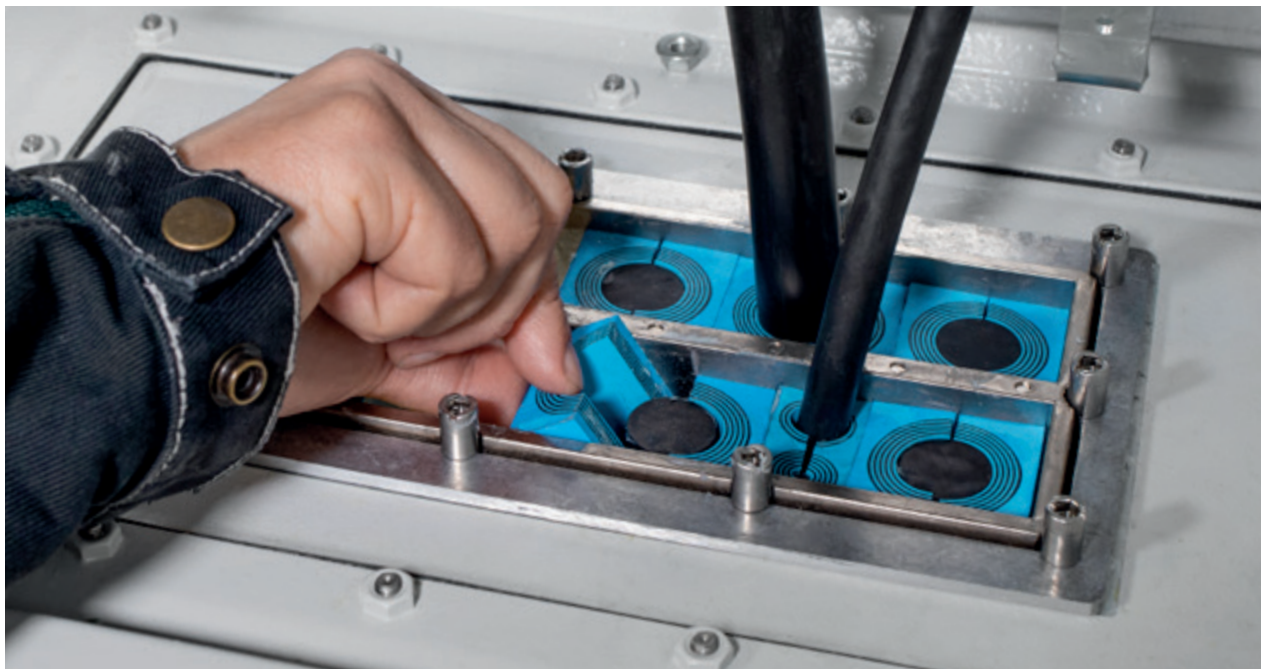
Secure long-term reliability

- Get the right sealing products
- Simplify quality assurance
- Save time and increase efficiency

Download Roxtec BIM objects on roxtec.com/bim

Easy installation

Roxtec seals are quick and easy to install. You can open and reinstall them after design changes and save a lot of time by using the built-in spare capacity for upgrades with additional cables and pipes. You can always find best practice on roxtec.com/installation.



Support online and onsite



Installation videos

Watch and learn the safest sealing process.



Installation tools

Speed up daily work with our smart tools.



Installation training

Let your team learn our best tips and tricks.



Solutions for walls, floors and roof-tops

Use the table to find a solution matching your needs. You are always welcome to contact your Roxtec representative for assistance.

	GH	GH FL100	GHM	G	GKO	SwanNeck
Bolting – Brick and concrete		●			●	
Bolting – Sandwich panels			●			
Bolting – Gypsum	●					
Bolting – Metal	●		●			●
Casting	●					
Welding				●		
Blast tested	●	●	●	●		
Fire rated	●	●	●	●	●	
EI60	●	●		●		
EI120	●	●		●		
Gas-tight			●	●		
Watertight			●	●	●	●
Dust-tight	●	●	●	●	●	●
Interior – IP 54						●
Exterior – IP 66/67	●	●	●	●	●	
Exterior – IP 68	●				●	
UL 1479	●	●		●	●	
Pest and rodent barrier	●	●	●	●	●	●
Retrofit, openable					●	
Rectangular frame solution	●	●	●	●	●	●
Round sleeve solution						
ES version available*	●	●	●	●	●	
BG version available**	●	●		●	●	
Ex version available***			●	●		

*Electromagnetic shielding **Bonding and grounding ***IECEX/ATEX rated

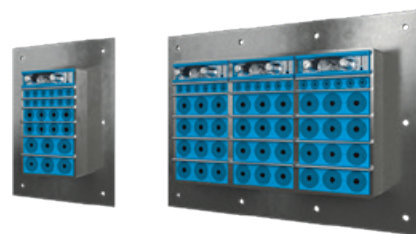
Complete product data online

Please visit roxtec.com/products for the latest and complete information on our sealing solutions. All technical data, such as product dimensions, ratings and certificates, drawings and installation instructions, are available online.

R + SLF R	R + SL R	RS + SLF RS	RS + SL RS	RS + SLFO/Ext	
				●	Bolting – Brick and concrete
●		●			Bolting – Sandwich panels
●		●			Bolting – Gypsym
●		●			Bolting – Metal
●		●			Casting
	●		●		Welding
●	●	●	●		Blast tested
●	●	●	●	●	Fire rated
●	●	●	●	●	EI60
●	●	●	●	●	EI120
	●		●		Gas-tight
●	●	●	●	●	Watertight
●	●	●	●		Dust-tight
	●		●		Interior – IP 54
●	●	●	●		Exterior – IP 66/67
					Exterior – IP 68
●	●	●	●		UL 1479
●	●	●	●		Pest and rodent barrier
				●	Retrofit, openable
					Rectangular frame solution
●	●	●	●	●	Round sleeve solution
	●		●		ES version available*
			●		BG version available**
	●		●		Ex version available***

Roxtec GH transit

Transit with flange, for casting or bolting.



The Roxtec GH is a cable and pipe seal for casting in concrete or bolting onto even structures. The rectangular steel frame allows for high cable and pipe packing density. The transit can be used with a GE extension frame to cover the depth of a thick wall.

- Rodent resistant
- Easy to maintain and inspect
- Provides built-in spare capacity

Installation

Structure of installation:

- Gypsum
- Metal
- Concrete

Mounting type:

- Bolting
- Casting

Ratings & certificates

Fire:

- E/EI rating according to EN 13501
- E/EI rating according to EN 45545 E60
- F/T rating according to UL 1479

Tightness:

- Gas: 0.1 bar (catastrophic)
- IP 66/67
- IP 68

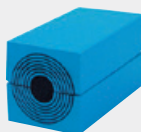
Sealing components



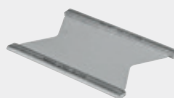
Roxtec GH frame



Roxtec Wedge & Wedge kit



Roxtec RM module with Multidiameter™



Roxtec Stayplate

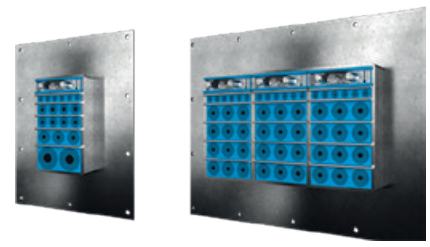


Roxtec Lubricant



Roxtec sealing kit

Roxtec GH FL100 transit



Transit with wide flange, for bolting onto uneven structures.

The Roxtec GH FL100 is a cable and pipe seal that allows for high packing density. The transit ensures a tight seal when bolted onto concrete or brick walls/floors. The rectangular steel frame has a 100mm wide flange to make it possible to place the bolting holes further from the opening in the wall to avoid the risk of cracks. The transit can be used with a GE extension frame in galvanized steel to cover the depth of a thick wall.

- Rodent resistant
- Area efficient
- Easy to maintain and inspect

Installation

Structure of installation:

- Brick
- Concrete

Mounting type:

- Bolting

Ratings & certificates

Fire:

- E/EI rating according to EN 13501
- F/T rating according to UL 1479

Tightness:

- Gas: 0,1 bar (catastrophic)
- IP 66/67

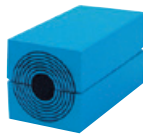
Sealing components



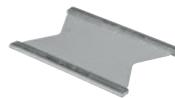
Roxtec GH FL100 frame kit



Roxtec Wedge & Wedge kit



Roxtec RM module with Multidiameter™



Roxtec Stayplate

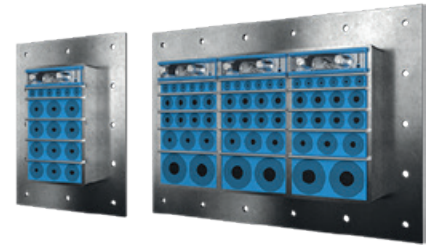


Roxtec Lubricant



Roxtec sealing kit

Roxtec GHM transit



Transit for high cable density and large cables.

The Roxtec GHM is a light-weight cable entry seal which is attached by bolting and includes a sealing strip to seal against the structure. The transit frame is available in different materials and in a single or various combinations of openings. The sealing modules are adaptable to cables and pipes of different sizes and can be used to build in spare capacity in the transit.

- Rodent resistant
- Area efficient

Installation

Structure of installation:

- Metal
- Sandwich panel
- Cabinets & enclosures

Mounting type:

- Bolting

Ratings & certificates

Fire:

- A-CLASS according to IMO 2010 FTP Code
- E/EI rating according to EN 13501

Tightness:

- Gas: 1 bar (catastrophic)
- Water: 2 bar (catastrophic)
- IP 66/67

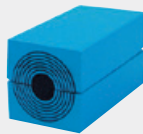
Sealing components



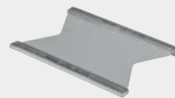
Roxtec GHM frame



Roxtec Wedge & Wedge kit



Roxtec RM module with Multidiameter™



Roxtec Stayplate



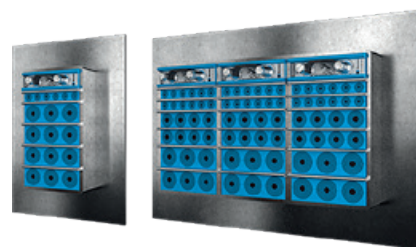
Roxtec Lubricant



Roxtec sealing kit

Roxtec G transit

Transit with flange, for welding.



The Roxtec G is a cable and pipe seal with a steel frame for welding. The transit can be used with a GE extension frame in galvanized steel to cover the depth of a thick wall.

- Provides built-in spare capacity

Installation

Structure of installation:

- Metal
- Cabinets & enclosures

Mounting type:

- Welding

Ratings & certificates

Fire:

- A-CLASS according to IMO 2010 FTP Code
- E/EI rating according to EN 13501
- F/T rating according to UL 1479

Tightness:

- Gas: 2.5 bar (catastrophic)
- Water: 4 bar (catastrophic)

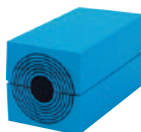
Sealing components



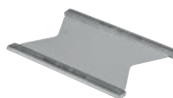
Roxtec G frame



Roxtec Wedge & Wedge kit



Roxtec RM module with Multidiameter™



Roxtec Stayplate

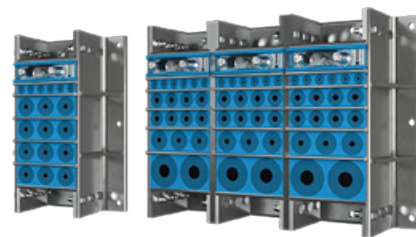


Roxtec Lubricant



Roxtec sealing kit

Roxtec GKO transit



Transit with a frame to bolt into different combinations.

The Roxtec GKO is a transit with an openable frame that can be bolted together in different sizes and into combinations depending on needs or existing hole size and geometry. It is also ideal for retrofit around existing cables and pipes. The frame is bolted to the structure.

- Rodent resistant
- Perfect for retrofit
- Provides built-in spare capacity

Installation

Structure of installation:

- Concrete

Mounting type:

- Bolting

Ratings & certificates

Fire:

- E/EI rating according to EN 13501
- F/T rating according to UL 1479

Tightness:

- IP 66/67
- IP 68

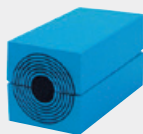
Sealing components



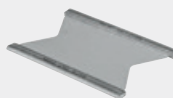
Roxtec GKO frame



Roxtec Wedge & Wedge kit



Roxtec RM module with Multidiameter™



Roxtec Stayplate



Roxtec Lubricant



Roxtec sealing kit

Roxtec SwanNeck transit

Cable and pipe transit with extended frame for bolting to roof-tops.



The Roxtec Swan Neck transit is designed for roof-top installations. It has an extended flanged frame with either one or two openings for sealing of one or multiple cables and pipes of different sizes.

- Rodent resistant
- Quick and easy to install

Installation

Structure of installation:

- Metal

Mounting type:

- Bolting

Ratings & certificates

Tightness:

- IP 54

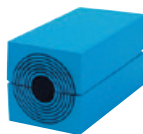
Sealing components



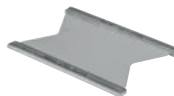
Roxtec Swan Neck frame



Roxtec Wedge & Wedge kit



Roxtec RM module with Multidiameter™



Roxtec Stayplate

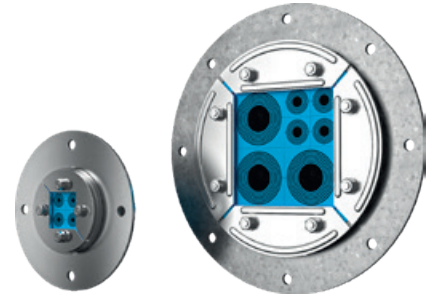


Roxtec Lubricant



Roxtec sealing kit

Roxtec R transit with SLF R



Round transit for sealing around multiple cables and pipes in a limited area.

The Roxtec R with SLF R is a cable and pipe transit with sleeve for round holes. The compression is integrated in the transit frame so it seals by expansion. The standard sealing modules are adaptable to cables and pipes of different sizes, and can be used to build in spare capacity in the transit. The net on the backside protects during horizontal installations (not included in R 70 and R 75). The sleeve is bolted to the structure.

- Rodent resistant
- Easy to maintain and inspect

Installation

Structure of installation:

- Metal
- Sandwich panel
- Gypsum

Mounting type:

- Bolting

Ratings & certificates

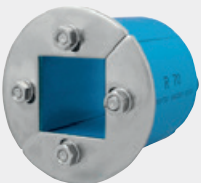
Fire:

- A-CLASS according to IMO 2010 FTP Code
- E/EI rating according to EN 13501
- E/EI rating according to EN 45545 E30
- F/T rating according to UL 1479
- H-CLASS according to IMO 2010 FTP Code + HC fire load curve

Tightness:

- Gas: 2.5 bar (catastrophic)
- Water: 4 bar (catastrophic)

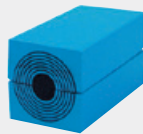
Sealing components



Roxtec R frame



Roxtec SLF R sleeve

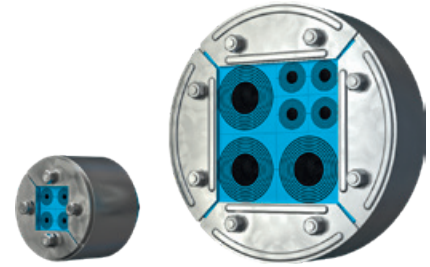


Roxtec RM module with Multidiameter™



Roxtec Lubricant

Roxtec R transit with SL R



Round transit for sealing of multiple cables and pipes in a limited area.

The Roxtec R with SL R is a cable and pipe transit with sleeve for round holes. The compression is integrated in the transit frame so it seals by expansion. The standard sealing modules are adaptable to cables and pipes of different sizes and can also be used to build in spare capacity in the transit. The net on the backside protects during horizontal installations (not included in R 70 and R 75). The sleeve is welded to the structure.

- Rodent resistant
- Easy to maintain and inspect

Installation

Structure of installation:

- Metal

Mounting type:

- Welding

Ratings & certificates

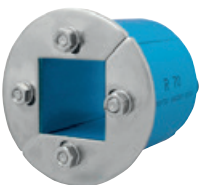
Fire:

- A-CLASS according to IMO 2010 FTP Code
- E/EI rating according to EN 45545 E30
- H-CLASS according to IMO 2010 FTP Code + HC fire load curve

Tightness:

- Gas: 2.5 bar (catastrophic)
- Water: 4 bar (catastrophic)

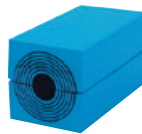
Sealing components



Roxtec R frame



Roxtec SL R sleeve

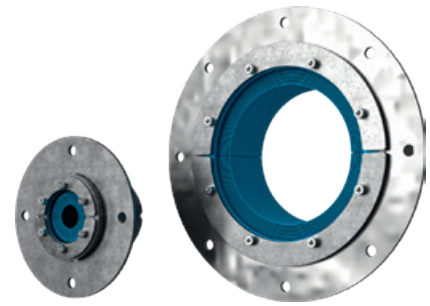


Roxtec RM module with Multidiameter™



Roxtec Lubricant

Roxtec RS seal with SLF RS



Penetration seal for a single cable or pipe.

The Roxtec RS with SLF RS is a seal with metal sleeve for single cables or pipes. The entry seal has two halves with removable layers making it adaptable to cables and pipes of different sizes. The sleeve is bolted to the structure.

- Quick and easy to install
- Provides excellent cable retention

Installation

Structure of installation:

- Gypsum
- Sandwich panel
- Metal

Mounting type:

- Bolting

Ratings & certificates

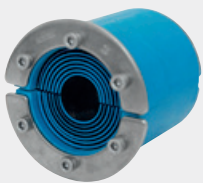
Fire:

- A-CLASS according to IMO 2010 FTP Code
- E/EI rating according to EN 13501
- E/EI rating according to EN 45545 E30
- F/T rating according to UL 1479
- H-CLASS according to IMO 2010 FTP Code + HC fire load curve
- Jet fire according to ISO 22899-1 and OTI 95634

Tightness:

- Gas: 2.67 bar (catastrophic)
- Water: 4 bar (catastrophic)

Sealing components



Roxtec RS seal

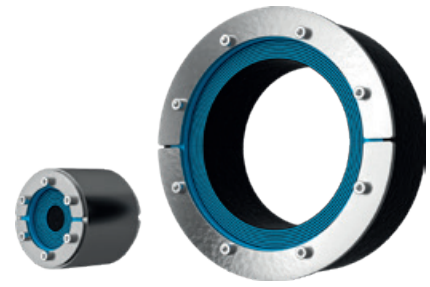


Roxtec SLF RS sleeve



Roxtec Lubricant

Roxtec RS seal with SL RS



Penetration seal for a single cable or pipe.

The Roxtec RS with SL RS is a seal with metal sleeve for single cables or pipes. The entry seal has two halves with removable layers making it adaptable to cables and pipes of different sizes. The sleeve is welded to the structure.

- Quick and easy to install
- Provides excellent cable retention

Installation

Structure of installation:

- Metal

Mounting type:

- Welding

Ratings & certificates

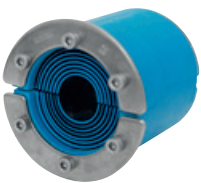
Fire:

- A-CLASS according to IMO 2010 FTP Code
- E/EI rating according to EN 45545 E30
- H-CLASS according to IMO 2010 FTP Code + HC fire load curve
- Jet fire according to ISO 22899-1 and OTI 95634

Tightness:

- Gas: 2.67 bar (catastrophic)
- Water: 4 bar (catastrophic)

Sealing components



Roxtec RS seal

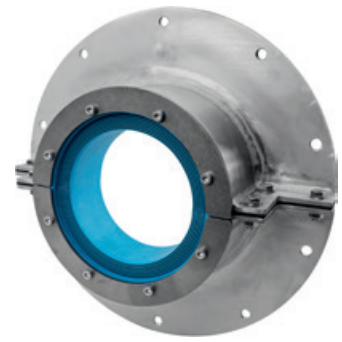


Roxtec SL RS sleeve



Roxtec Lubricant

Roxtec RS seal with SLFO/Ext



Penetration seal for a single cable or pipe.

The Roxtec RS with SLFO/Ext is a seal with sleeve for single cables or pipes. The entry seal has two halves with removable layers making it adaptable to cables and pipes of different sizes. The design of the transit makes it easy to install around existing cables or pipes. The openable sleeve with a wide flange to comply with minimum edge distance between bolt and opening is bolted to uneven structures such as concrete.

- Perfect for retrofit
- Adapts to cables and pipes of different sizes
- Openable

Installation

Structure of installation:

- Concrete

Mounting type:

- Bolting

Ratings & certificates

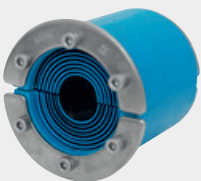
Fire:

- E/EI rating according to EN 13501

Tightness:

- Water: 0.3 bar (constant)

Sealing components



Roxtec RS seal



SLFO/Ext sleeve kit



Roxtec Lubricant

Solutions for underground foundations

Use the table to find a solution matching your needs. You are always welcome to contact your Roxtec representative for assistance.

	R UG	RS UG	H3 UG	Knock-out sleeve
Multiple cables/pipes	●			
Single cable/pipe		●		
Cables/pipes in trefoil formation			●	
For use prior to cable/pipe routing				●
Standing water pressure	●	●	●	●
Installation in running water	●	●	●	
Watertight	●	●	●	●
Gas-tight	●	●	●	●
Cable retention	●	●	●	
Rodent protection	●	●	●	●
Pre-configured sealing kits available	●			

Complete product data online

Please visit roxtec.com/products for the latest and complete information on our sealing solutions. All technical data, such as product dimensions, ratings and certificates, drawings and installation instructions, are available online.

Roxtec R UG™ transit

Transit in flexible configuration for multiple cables and pipes entering via foundations.



The Roxtec R UG™ is a transit for multiple cables and pipes entering via foundations. The seal allows for a mix of small and large cables and pipes in the same opening and works as a long-lasting barrier against flooding, gas, humidity and rodents. The transit withstands extreme cable bending and can be installed into sleeves, conduits and core drilled holes also in wet conditions and environments with running water.

- Rodent resistant
- Area efficient
- Quick and easy to install
- Easy to maintain and inspect

Installation

Structure of installation:

- Concrete

Mounting type:

- Existing hole
- Existing sleeve

Ratings & certificates

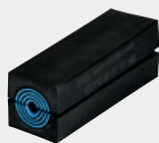
Tightness:

- Gas: 0.3 bar (constant)
- Water: 0.5 bar (constant)
- IP 68

Sealing components



Roxtec R UG™ frame



Roxtec RM UG™
module with
Multidiameter™



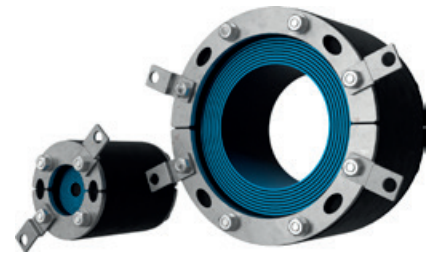
Roxtec Lubricant



Roxtec R UG™ kit

Roxtec RS UG™ seal

Round seal for single cables and pipes entering via foundations.



The Roxtec RS UG™ is a two-part seal for installation around single cables or pipes entering via foundations. It works as a long-lasting barrier against flooding, gas, humidity and rodents. The transit can be installed also in wet conditions and environments with running water. It withstands extreme cable bending and has a +5mm tolerance towards the aperture as well as an indicator showing when a compressed seal is achieved. The seal can be installed into sleeves, conduits and core drilled holes.

- Rodent resistant
- Quick and easy to install
- Easy to maintain and inspect

Installation

Structure of installation:

- Concrete

Mounting type:

- Existing hole
- Existing sleeve

Ratings & certificates

Tightness:

- Gas: 0.3 bar (constant)
- Water: 0.5 bar (constant)
- IP 68

Sealing components



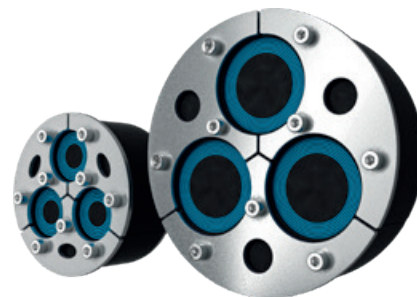
Roxtec RS UG™ seal



Roxtec Lubricant

Roxtec H3 UG™ seal

Transit for cables entering via foundations.



The Roxtec H3 UG™ seal is ideal for cables entering via foundations and works as a long-lasting barrier against flooding, gas, humidity and rodents. It is a three-part seal that is easy to install also in wet conditions and in environments with running water. The transit withstands extreme cable bending and has a +3mm tolerance towards the aperture as well as an indicator showing when a compressed seal is achieved. The seal can be installed into sleeves, conduits and core drilled holes.

- Rodent resistant
- Quick and easy to install
- Provides excellent cable retention

Installation

Structure of installation:

- Concrete

Mounting type:

- Existing hole
- Existing sleeve

Ratings & certificates

Tightness:

- Gas: 0.3 bar (constant)
- Water: 0.5 bar (constant)
- IP 68

Sealing components



Roxtec H3 UG™ seal



Roxtec Lubricant

Roxtec knock-out sleeve



Sleeve with knock-out plate for sealing prior to cable and pipe routing.

The Roxtec knock-out sleeve (KOS) keeps your building dry during and after construction, and provides spare capacity for future needs. The sleeve is easily fixed and cast into structures of varying thickness and ensures a tight seal until its plate is knocked out for cable and pipe routing. The sleeves have an integrated feature which allows them to be connected into space efficient clusters. Once cables or pipes are routed, they are to be sealed with Roxtec UG™ underground solutions in the corresponding size.

- Light-weight
- Area efficient
- Quick and easy to install

Installation

Structure of installation:

- Concrete

Mounting type:

- Casting

Ratings & certificates

Tightness:

- Gas: 0.3 bar (constant)
- Water: 0.5 bar (constant)
- IP 68

Solutions for cabinets

Use the table to find a solution matching your needs. You are always welcome to contact your Roxtec representative for assistance.

	CF 16	CF 8/32	CF 24	ComSeal	EzEntry	CRL	RG M63
Cable range (mm)	3.5–34.5	3.5–34.5	3.5–32.5	3.5–34.5	3.5–34.5	4–54	3.5–34.5
IP 54						●	
IP 55				●			
IP 66/67	●	●			●		●
IP 69K	●						
UL/NEMA 3, 12, 12K				●			
UL/NEMA 4, 4X, 12, 13	●	●			●		●
Composite					●		
Nickel-plated brass							●
Nickel-plated aluminum		●					
Powder coated aluminum				●			
Powder coated mild steel	●						
Stainless steel	●			●			●
Rectangular frame solution	●	●	●	●	●		
Round sleeve solution						●	●
Retrofit, openable	●		●				
ES version available*	●	●		●			
BG version available**		●					
Ex version available***	●	●					

*Electromagnetic shielding **Bonding and grounding ***IECEX/ATEX rated

Complete product data online

Please visit roxtec.com/products for the latest and complete information on our sealing solutions. All technical data, such as product dimensions, ratings and certificates, drawings and installation instructions, are available online.

Roxtec CF 16 transit



Transit with a low profile metal frame design.

The Roxtec CF 16 is a low profile cable entry seal for enclosures. The transit is available in powder coated mild steel or stainless steel as well as in openable versions. The stainless steel version is rated to IP 69K.

- Light-weight
- Area efficient
- Allows pre-terminated cables

Installation

Structure of installation:

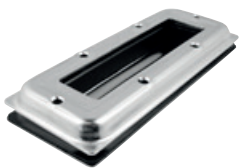
- Cabinets & enclosures

Ratings & certificates

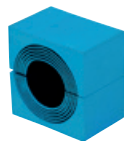
Tightness:

- IP 66/67
- IP 69K
- UL/NEMA 4,4X,12,13

Sealing components



Roxtec CF 16 frame



Roxtec CM module with Multidiameter™



Roxtec Lubricant



Roxtec CF 16 kit

Roxtec CF 8/32 transit



High cable density transit with aluminum frame.

The Roxtec CF 8 and CF 32 cable entry seals have frames of cast aluminum and sealing modules which are adaptable to a variety of cable sizes.

- Rodent resistant
- Light-weight
- Area efficient
- Allows pre-terminated cables

Installation

Structure of installation:

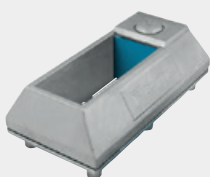
- Cabinets & enclosures

Ratings & certificates

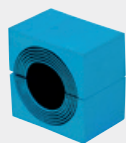
Tightness:

- IP 66/67
- UL/NEMA 4,4X,12,13

Sealing components



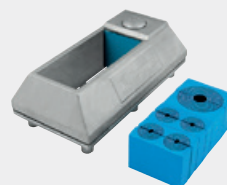
Roxtec CF 8/32 frame



Roxtec CM module with Multidiameter™



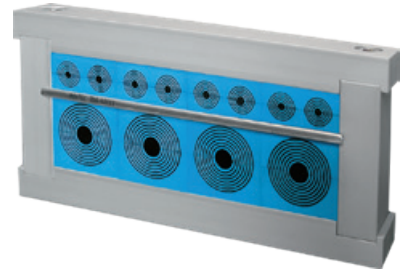
Roxtec Lubricant



Roxtec CF 8/32 kit

Roxtec CF 24 transit

Openable transit for cabinets and enclosures.



The Roxtec CF 24 entry seal has a bolted together frame made from aluminum. Compression is integrated in the frame. The frame is openable and easily installed around existing cables. The product is supplied as ready-made kits which include all necessary components.

- Light-weight
- Area efficient
- Perfect for retrofit

Installation

Structure of installation:

- Cabinets & enclosures

Ratings & certificates

Fire:

- E/EI rating according to EN 45545 E30

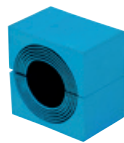
Tightness:

- IP 66/67

Sealing components



Roxtec CF 24 frame



Roxtec CM module with Multidiameter™



Roxtec C Stayplate



Roxtec Lubricant



Roxtec CF 24 kit

Roxtec ComSeal™

IP 55 rated entry seals with aluminum frame.



The Roxtec ComSeal™ is rated for IP 55 and available with powder coated aluminum and AISI 316 stainless steel frames. The transit is available in six different sizes to accommodate up to 32 cables.

- Rodent resistant
- Corrosion resistant
- Light-weight
- Area efficient

Installation

Structure of installation:

- Cabinets & enclosures

Ratings & certificates

Tightness:

- IP 55
- UL/NEMA 3,12,12K

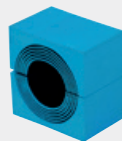
Sealing components



Roxtec ComSeal™ frame



Roxtec ComSeal™ AISI 316 frame



Roxtec CM module with Multidiameter™



Roxtec Assembly Gel



Roxtec ComSeal™ kit

Roxtec EzEntry™

Light-weight cable entry seals with composite frame.



The Roxtec EzEntry™ cable entry seals have light-weight composite frames and fit directly into standard openings. The seals are available in six sizes for cable capacity from 4 to 32 cables, and provide IP 66/67 protection.

- Corrosion resistant
- Area efficient
- Allows pre-terminated cables

Installation

Structure of installation:

- Cabinets & enclosures

Ratings & certificates

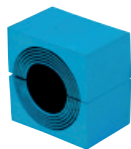
Tightness:

- IP 66/67
- UL/NEMA 4,4X,12,13

Sealing components



Roxtec EzEntry™
frame



Roxtec CM module
with Multidiameter™



Roxtec Lubricant



Roxtec EzEntry™ kit

Roxtec CRL seal

Round seals for telecom shelters and cabinets.



The Roxtec CRL is a round sealing solution for 4" and 5" holes. The square packing space in the frame houses sealing modules and cables, pipes and fiber optics. Compression is integrated in the frame.

- Light-weight
- Area efficient
- Adapts to cables and pipes of different sizes

Installation

Structure of installation:

- Cabinets & enclosures

Ratings & certificates

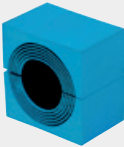
Tightness:

- IP 54

Sealing components



Roxtec CRL frame



Roxtec CM module with Multidiameter™

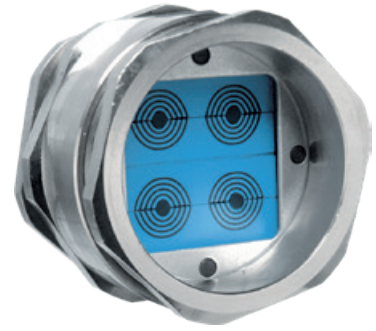


Roxtec Assembly Gel



Roxtec CRL kit

Roxtec RG M63 seal



Round cable entry for standard round knock-outs.

The Roxtec RG M63 is a round entry seal for multiple cables. The transit fits standard ISO 63 knock-outs and can accommodate from 1 to 9 cables. This cable gland option is available in nickel-plated brass or 316L stainless steel.

- Area efficient
- Allows pre-terminated cables

Installation

Structure of installation:

- Cabinets & enclosures

Ratings & certificates

Tightness:

- IP 66/67
- UL/NEMA 4,4X,12,13

Sealing components



Roxtec RG M63 frame



Roxtec GM module with Multidiameter™



Roxtec Lubricant



Roxtec RG M63 kit

Disclaimer

*The Roxtec cable and pipe entry sealing system (the Roxtec system) is a modular-based system of sealing products consisting of different components. Each and every one of the components is necessary for the best performance of the Roxtec system. The Roxtec system has been certified to resist a number of different hazards. Any such certification, and the ability of the Roxtec system to resist such hazards, is dependent on all components that are installed as a part of the Roxtec system. Thus, the certification is not valid and does not apply unless all components installed as part of the Roxtec system are manufactured by or under license from Roxtec (authorized manufacturer). Roxtec gives no performance guarantee with respect to the Roxtec system, unless (I) all components installed as part of the Roxtec system are manufactured by an authorized manufacturer and (II) the purchaser is in compliance with (a), and (b), below.

(a) During storage, the Roxtec system or part thereof, shall be kept indoors in its original packaging at room temperature.

(b) Installation shall be carried out in accordance with Roxtec installation instructions in effect from time to time.

The product information provided by Roxtec does not release the purchaser of the Roxtec

system, or part thereof, from the obligation to independently determine the suitability of the products for the intended process, installation and/or use.

Roxtec gives no guarantee for the Roxtec system or any part thereof and assumes no liability for any loss or damage whatsoever, whether direct, indirect, consequential, loss of profit or otherwise, occurred or caused by the Roxtec systems or installations containing components not manufactured by an authorized manufacturer and/or occurred or caused by the use of the Roxtec system in a manner or for an application other than for which the Roxtec system was designed or intended.

Roxtec expressly excludes any implied warranties of merchantability and fitness for a particular purpose and all other express or implied representations and warranties provided by statute or common law. User determines suitability of the Roxtec system for intended use and assumes all risk and liability in connection therewith. In no event shall Roxtec be liable for indirect, consequential, punitive, special, exemplary or incidental damages or losses.

The Roxtec products are offered and sold in accordance with the conditions of the Roxtec General Terms of Sales. The latest version of the Roxtec General Terms of Sales can be found and downloaded from roxtec.com/general-terms-of-sales.

All rights reserved

We reserve the right to make changes to the product and technical information without further notice. Any errors in print or entry are no claims for indemnity. The content of this publication is the property of Roxtec International AB and is protected by copyright.

Protecting life and assets

Roxtec is the world leader within flexible cable and pipe transits. Since the start in Sweden in 1990 we have grown successfully to cover all continents. Our passion is innovative sealing solutions, and our goal is to make our world a safer place.

- Extensive R&D resources and advanced test facilities
- Inventor of Multidiameter™
- Customers in more than 80 markets